

R | TEA HOUSE  
RIDGE

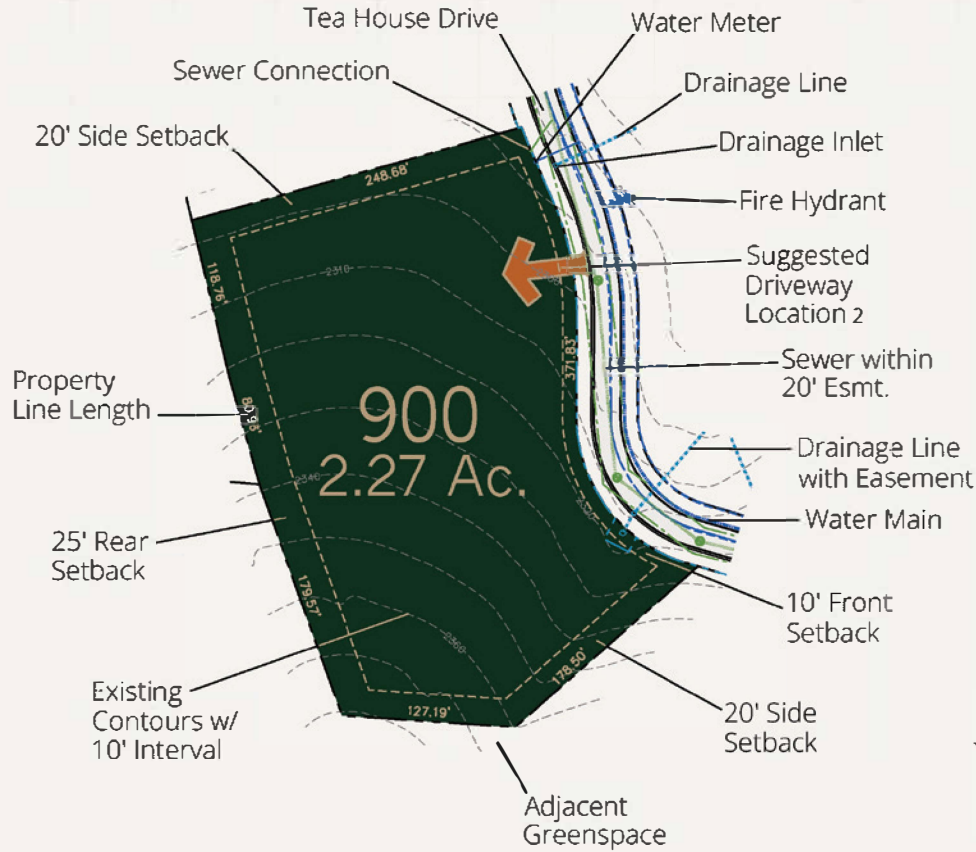
RAMBLEBILTMOREFOREST.COM



Lot 900

619 TEA HOUSE DRIVE





## Homesite Price

**\$850,000<sup>1</sup>**

## Features

- Estate-sized homesite with panoramic views of the surrounding forests
- Elevated build site
- Surrounded by lush woodlands with adjacent greenspace to the south

## Details

**Address** 619 Tea House Drive  
**Neighborhood** Woodland Preserve  
**Lot size** 2.27± Acres

<sup>1</sup> Price listed is for homesite only.

<sup>2</sup> The "suggested driveway location" indicated is a preliminary recommendation based on topography, visibility, and other considerations. Final driveway locations will be determined through the site design review process.

FOR MORE INFORMATION  
**(828) 274-1336**  
 RAMBLE@BILTMOREFARMS.COM