

R | TEA HOUSE  
RIDGE

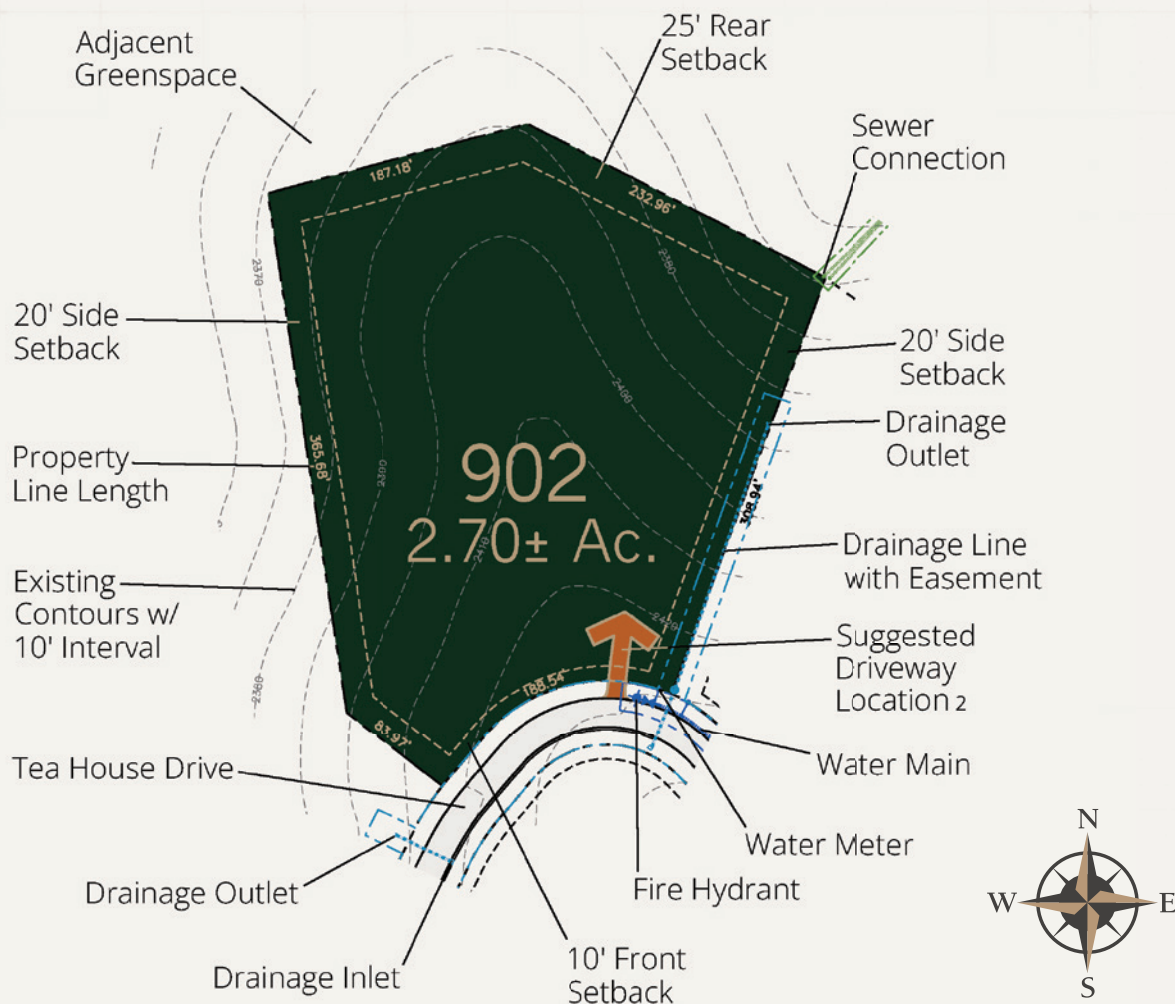


Lot 902

676 TEA HOUSE DRIVE

PROPOSED BY JADE MOUNTAIN BUILDERS





## Homesite Price

# \$2,400,000<sup>1</sup>

<sup>1</sup> Price listed is for homesite only. The concept home shown was designed specifically for this homesite by Altura Architects and Jade Mountain Builders and has been approved by the Ramble Design Review Committee (DRC). Please contact the builder for details and home price. Buyers are free to work with any architect and approved builder of their choosing. All home designs must be approved by the DRC.

<sup>2</sup> The "suggested driveway location" indicated is a preliminary recommendation based on topography, visibility, and other considerations. Final driveway locations will be determined through the site design review process.

## Details

**Address** 676 Tea House Drive

**Neighborhood** Woodland Preserve

**Lot size** 2.70± Acres

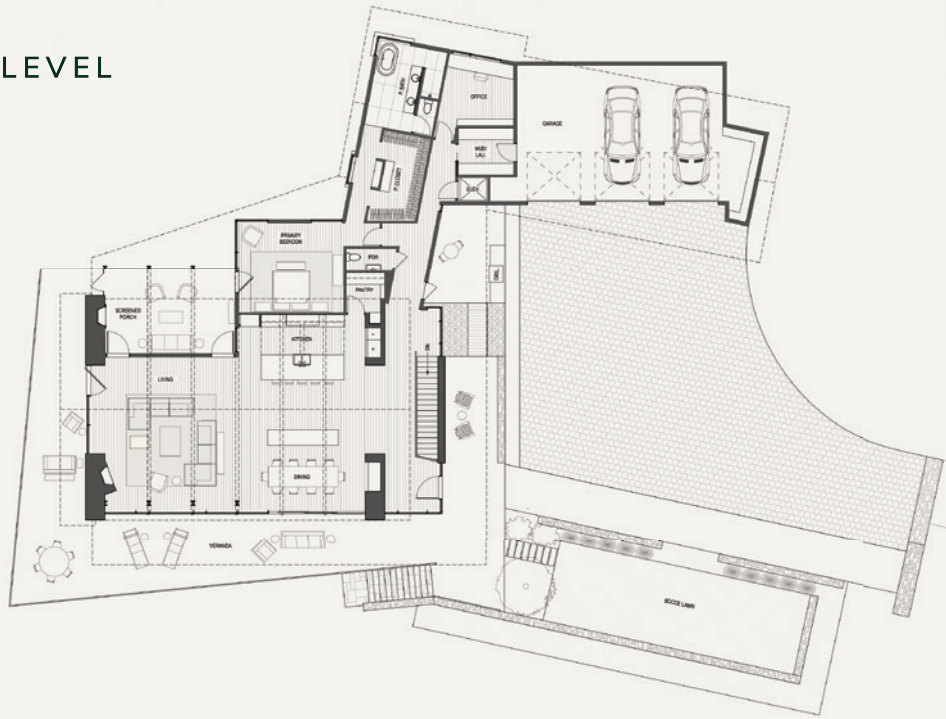
## Features

- Natural peninsula contours offering an easy build site
- Potentially sweeping 180° northerly mountain views
- Large open greenspace to the left and back



Concept Home

MAIN LEVEL



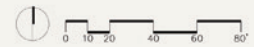
LOWER LEVEL







PROPOSED SITEPLAN



FOR MORE INFORMATION

(828) 274-1336

RAMBLE@BILTMOREFARMS.COM

**R** | TEA HOUSE  
RIDGE

RAMBLEBILTMOREFOREST.COM

©2025 Ramble Biltmore Forest LLC. A portion of The Ramble is in unincorporated Buncombe County. This portion of the property may remain part of Buncombe County or may be annexed into the Town of Biltmore Forest or the City of Asheville. Setbacks shown on this plan are as established by The Ramble Design Guidelines. Lot acreage and boundary dimensions are preliminary and subject to recording of the final plat. Final surveyed acreage and dimensions may vary. Topography shown is from aerial survey. Contours are at a 10 foot interval. Utility locations shown are based on design (not as-built) information. This plan is for illustrative purposes only and subject to change. Buyer should refer to final plat for detailed lot descriptions prior to closing.