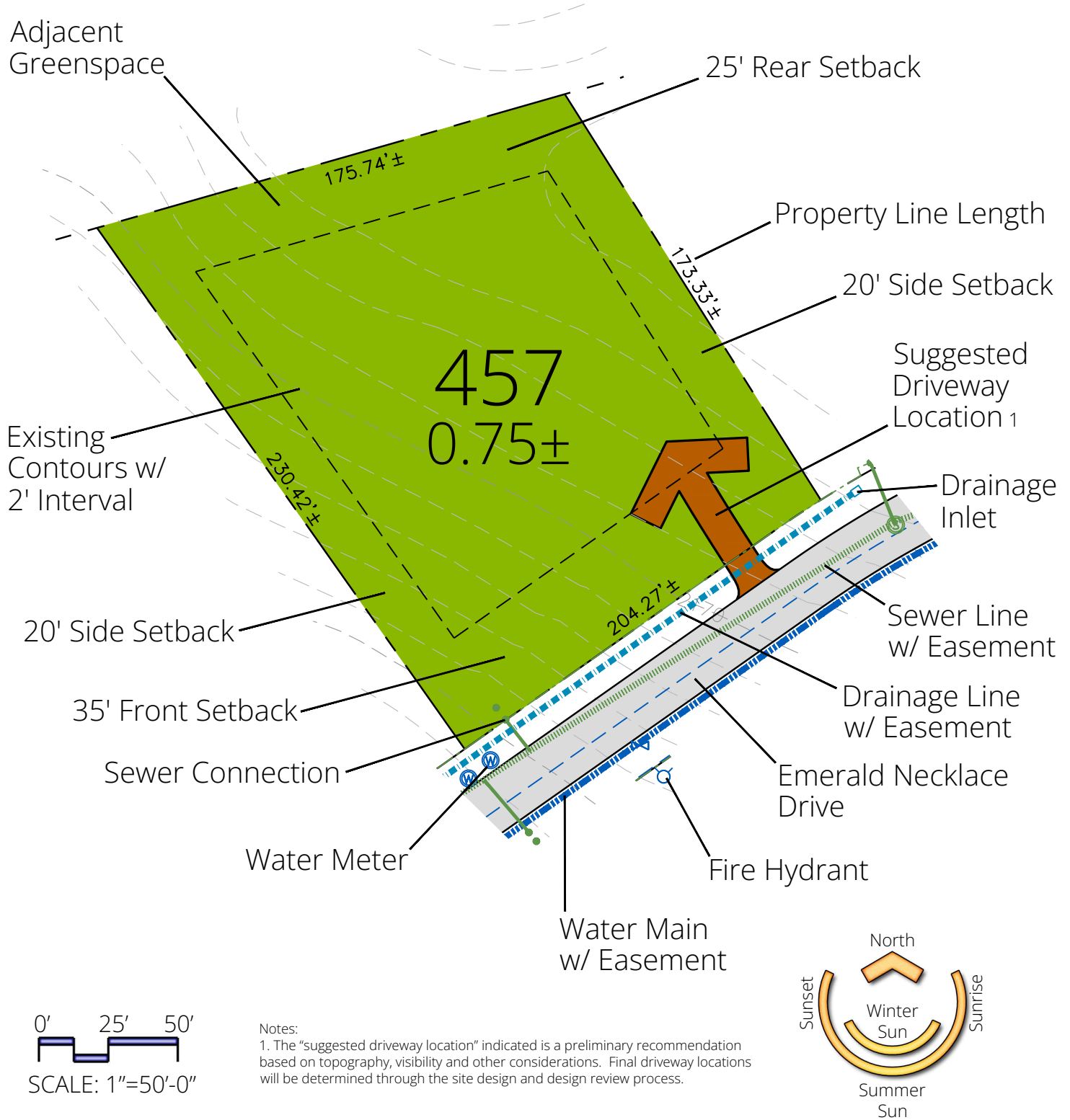


# Lot 457



© 2024 Ramble Biltmore Forest LLC. A portion of The Ramble is in unincorporated Buncombe County. This portion of the property may remain part of Buncombe County or may be annexed into the Town of Biltmore Forest or the City of Asheville. Setbacks shown on this plan are as established by The Ramble Design Guidelines. Lot acreage and boundary dimensions are preliminary and subject to recording of the final plat. Final surveyed acreage and dimensions may vary. Topography shown is from aerial survey. Contours are at a 2 foot interval. This plan is for illustrative purposes only and subject to change. Buyer should refer to final plat for detailed lot descriptions prior to closing.

2024.06.10

